

PRINTABLE INFO SHEET

Series: Westlake MOD

Model: 3WM1062-P



About This Model

Style: MOD / Bedrooms: 3 / Bathrooms: 2 / Square Feet: 1600

CUSTOMER CONTACT

Notes:

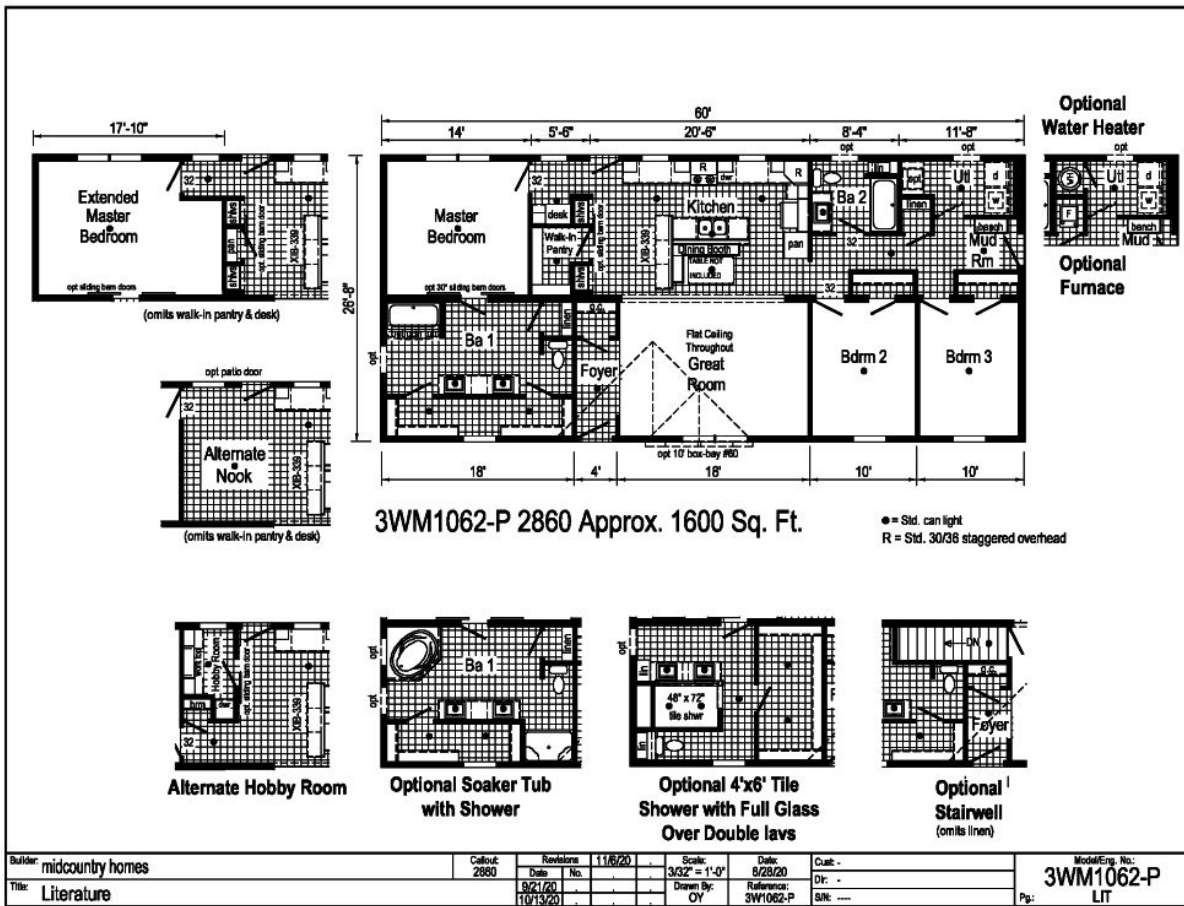
PRINTABLE INFO SHEET

Series: Westlake MOD

Model: 3WM1062-P



Floorplan



CUSTOMER CONTACT

Notes:

PRINTABLE INFO SHEET

Series: Westlake MOD

Model: 3WM1062-P



Standards & Features

Interior

- Primed Drywall Throughout
- Orange Peel Finish
- 8'-0" Flat Ceiling
- Orange Peel Finish
- Recessed LED Lights
- Black Dining Room Light
- 2-Panel White Painted
- Craftsman Interior Doors
- Pre-Hung Doors with Mortise Hinges
- Metal Interior Passage Sets
- Window Valances
- 1" Mini Blinds Throughout
- Smoke Detectors with Battery Back-Up
- Wire Shelving in Closets
- White Painted Mouldings Throughout
- 2 1/4" Window and Door Casing

Exterior

- Black Lantern Light at Front and Rear Door
- Vinyl Dutch Lap Siding
- Double Low-E Vinyl Insulated Windows - Mulled
- Lineals Front Door Side
- GFI-Protected Exterior Receptacle at Each Exterior Door
- O.S.B. Sheathing
- Fixed Roof

Exterior (continued)

- 12" Overhangs & Eaves
- 3-Tab Shingles
- Ridge Vent Roof Ventilation System
- Ice Shield
- House Wrap
- 3/0x6/8 Fiberglass 6-Panel Front & Rear
- Door w/ Deadbolt Keyed Alike Locksets

Kitchen

- Empire Brushed Nickel High Rise Faucet
- Stainless Steel Sink 33x22x8
- One USB Receptacle
- 30" Black Free-Standing Gas Range
- Power Range Hood with Fan & Light
- 18 Cu. Ft. Black Frost-Free Double Door Refrigerator

Baths

- 60" Fiberglass Tub/Showers
- Tub/Shower Curtain & Curved Rod
- 1.6 Gallon Per Flush Elongated Toilets
- China Stool, Tank, & Lid
- Square China Sinks with Overflows & Pop-Up Drains

CUSTOMER CONTACT

Notes:

PRINTABLE INFO SHEET

Series: Westlake MOD

Model: 3WM1062-P



Standards & Features (continued)

Baths (continued)

- Bevel Edge Mirrors
- Empire Brushed Nickel Faucets
- Anti-Scald Valves on Showers & Tubs

Cabinetry

- KCMA
- Premium Mission Cabinet Doors with Full Overlay
- Premium Cabinet Face Frames & Stiles
- Brushed Nickel Cabinet Hardware
- Hidden Cabinet Hinges
- 30"/36" Staggered Overhead Cabinets
- Base & Wall Cabinets with Adjustable Shelves
- 100# Undermount Soft Close Drawer Guides
- Laminate Countertops with Crescent Edge
- 4" Laminate Backsplash
- 36" High Vanities

Utilities

- 200 AMP Electrical Service
- Plumb & Wire for Washer
- Wire & Vent for Dryer
- Water Shut Offs Throughout
- Main Water Shut-Off Valve
- One Exterior Water Faucet
- Gas Lines Stubbed
- Drain Lines Stubbed

Utilities (continued)

- 5-Wire Thermostat
- Copper Wiring Throughout

Insulation

- Walls R-19 Fiberglass Insulation Ceiling R-38 Avg. Blown Insulation

Flooring

- Take Away Shaw Carpet with ShawGuard Carpet Protector
- Rebond Carpet Pad with Tackstrip Carpet Installation
- LuxFlor No-Wax Vinyl Floor Coverings

Bedrooms

- Wire Shelving in Closets
- Switched Light in All Walk-In Closets

Construction

- 2x10 Floor Joist, Double Rim Joists
- 3/4" OSB Decking**
- 2x Bottom Plates
- 2x Top Plate Interior Walls
- 2x Top Plate Exterior Walls
- 2x6 Exterior Walls on 16" Centers**
- 82" Window Headers
- 40# Roof Load
- 2-10 Extended Warranty
- **Spacing for Framing Members may vary due to Design Requirements

CUSTOMER CONTACT

Notes:
